



Hiroshima Shudo University Exchange Program Hiroshima, Japan

About HSU

Hiroshima Shudo University (HSU) is a university consisting of 7 faculties, 13 departments, 4 graduate schools. HSU has 37 overseas partner universities in 17 countries and regions around the world, making it one of the top private universities in the Chugoku and Shikoku Region of Japan in terms of international exchange. On average around 200 students take part in study abroad programs and approximately 130 international students are accepted to study at HSU full-time as well as on exchange and short-term Japanese language programs.

We are located only 30 minutes by bus from Hiroshima city center, and the peaceful campus full of greenery is an ideal place to study.

About Hiroshima

Hiroshima is home to two UNESCO World Heritage sites, the Hiroshima Peace Memorial (*Genbaku* Dome or Atomic Bomb Dome) in the Peace Memorial Park and Itsukushima Shrine on Miyajima. Both these sites and many more attractions in and around Hiroshima City bring over 1 million visitors to the local area every year. Both of these sites were registered on the UNESCO World Heritage List in December 1996.

Support for Exchange Students

1. Buddy Program

We match each international exchange student with an HSU student 'buddy' to support them during their studies here to ensure that their time in Japan is both fulfilling and fun. Feel free to ask them to help you with questions about life in Japan or the Japanese language.

2. Resident Assistant (RA)

Specially selected local students willingly support international students living in International House (i-House).

They will help make your Japan life comfortable and meaningful. Also involved in the planning and operation of events regularly held at i-House, they play a role in connecting international students with local residents.

3. International Affairs Center / iCafe

We provide support for international students and student-led events planning. At the "International Office Support Desk" you can consult us about classes or problems in your daily life. "iCafe" is a space where international students and local students can interact. Also held there are events such as the "Language Classes" where international students teach their first language to local students and "Global Weeks" where everyone can learn about diverse cultural practices.

Accommodation

Hiroshima Shudo University International House (“i-House”) is an off-campus residence for exchange students. Each room is equipped with bathroom, air-conditioning, heating, refrigerator and internet connection. There is a communal kitchen and dining room.

Monthly rent is ¥31,300, and the moving-in fee is ¥29,800.



Financial Support

We provide each exchange student with a monthly allowance of ¥50,000. We also provide a one-off payment of ¥50,000 to each exchange student at the beginning of their first term at HSU to help them start off their living abroad experience. Students are expected to contribute to events, presentations, and other such activities at HSU during their time here.

Academic information

A. Term Options

Spring Semester: April-July / Fall Semester: September-January

B. Visa requirement

Exchange students must register and complete more than 10 hours of courses per week in order to qualify for the Japanese ‘Student’ Visa status and to maintain exchange student status at HSU. To fulfil this requirement, attending at least 7 classes every week is necessary (90 minutes constitute one class).

C. Courses for International Students

1. Japanese (I~VIII)

These courses are designed for international students who wish to enhance their academic and communicative Japanese language proficiencies. Classes are leveled according to the results of two online Japanese tests and an interview. Japanese courses are offered in small classes, allowing students to have a closer relationship with faculty members and fellow students, and to deepen their understanding of the respective course content.

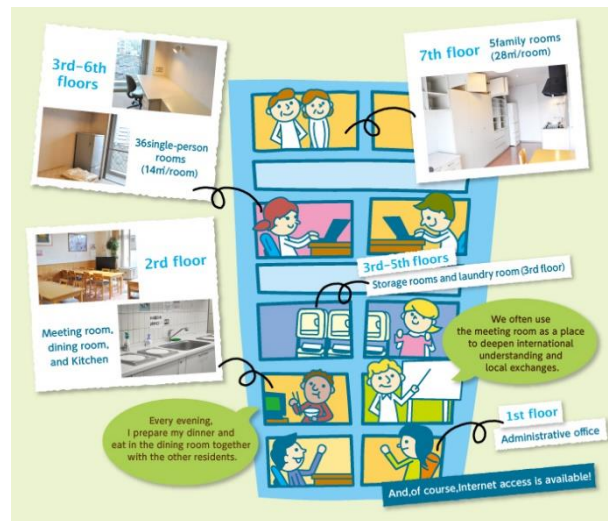
2. Multicultural Project, Japan Topics

Multicultural Project is designed for Japanese and international students to engage in collaborative learning on various Japan-related themes toward the completion of a joint final project or presentation. Five to six courses are offered each semester of which roughly half are taught in English.

Japan Topics--also open to both international and Japanese students--is a set of courses designed to further develop student knowledge of current Japan through examining topics such as in politics, economy, environment and gender. Courses are taught in English or easier Japanese.

3. Departmental Undergraduate Courses

International exchange students with at least a JLPT N1-level proficiency may be able to take some regular undergraduate courses upon meeting the course requirements and gaining instructor approval.



More information

Please visit our website:

<https://www.shudo-u.ac.jp/english/index.html>

Also, please check the fact sheet for the year you are applying. The fact sheet is sent to your program coordinator every year.

Contact

Hiroshima Shudo University
International Affairs Center

Email: kokusai@js.shudo-u.ac.jp

Phone: +81-82-830-1103

Address: 1-1-1, Ozuka-higashi, Asaminami-ku, Hiroshima 731-3195, JAPAN

HSU IAC Official SNS

Instagram @shudo_iac



SHUDO_IAC